



Community Meeting July 24, 2008

Presented by:

CITY OF BOSTON

Boston Transportation Department

Tetra Tech Rizzo

The Cecil Group

AGENDA

■ Project Overview

Introduction of Consultant Team

Public Process and Schedule

Scope Outline

Project Goals

■ Community Discussion

Identify Issues and Opportunities

www.cityofboston.gov/transportation/rutherford/



CITY OF BOSTON

Rutherford Avenue/Sullivan Square Design Project
Tetra Tech Rizzo The Cecil Group Brown, Richardson & Rowe



Context and Project Area



CITY OF BOSTON

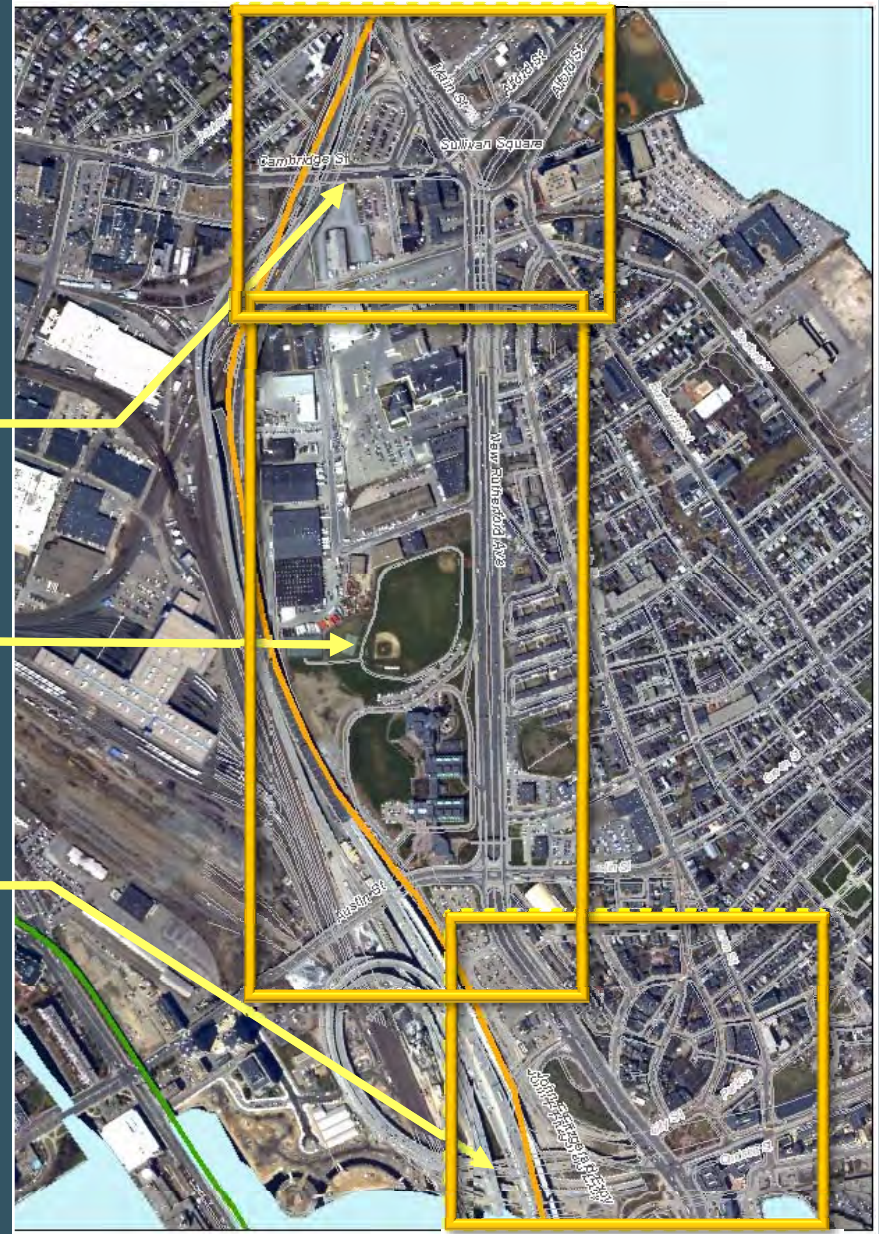
Rutherford Avenue/Sullivan Square Design Project
Tetra Tech Rizzo The Cecil Group Brown, Richardson & Rowe

2



Project Area

- Sullivan Square
- Austin Street/BHCC
- City Square



CITY OF BOSTON

Rutherford Avenue/Sullivan Square Design Project
Tetra Tech Rizzo The Cecil Group Brown, Richardson & Rowe



Typical Project Development Process

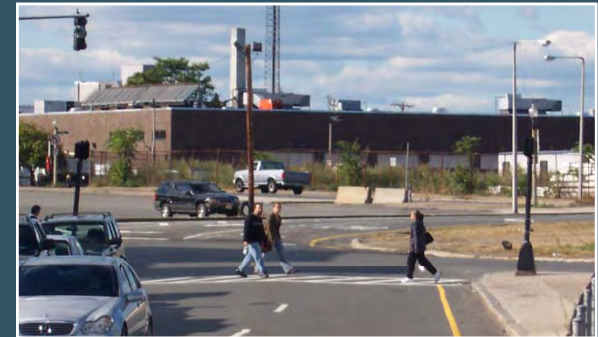
- Transportation Study
- Preliminary Design ← Current Step
- 25% Design
- Final Design (100%) and Bid Drawings
- Phased Construction
- Long Term Maintenance





Key Products

- Preliminary Roadway Design
- Preliminary Land Use & Development Approach
- Parcelization for Open Space & Development
- Cost Estimates and Phasing Strategies
- ENF



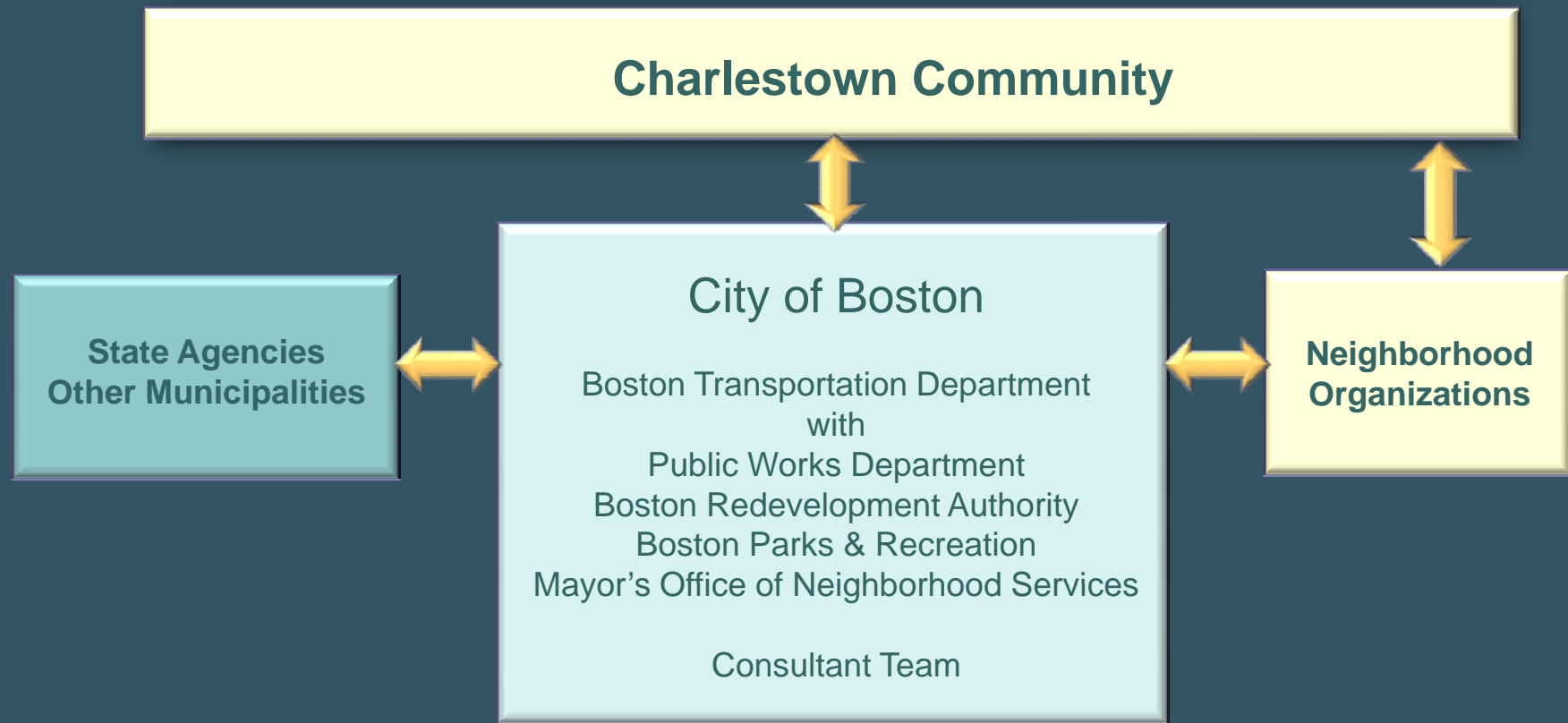
CITY OF BOSTON

Rutherford Avenue/Sullivan Square Design Project
Tetra Tech Rizzo The Cecil Group Brown, Richardson & Rowe

5



Public Process and Agency Coordination





Public Process and Agency Coordination

- Bi-monthly open public meetings hosted by the City of Boston
- All public meetings at Knights of Columbus
- Out reach through local newspaper and email lists
- Dedicated project web page
 - www.cityofboston.gov/transportation/rutherford/
- BTD to lead the core City team including the BRA and the PWD
- Coordination with Mass Highway, EOT, the MBTA
- Coordination with other communities





Project Schedule

	Fall 2008	Spring 2009	Summer/ Fall 2009
Establish Design Principles & Identify Conceptual Alternatives			
Analyze, Review & Select Conceptual Design			
Review of Preliminary Design			





Project Funding

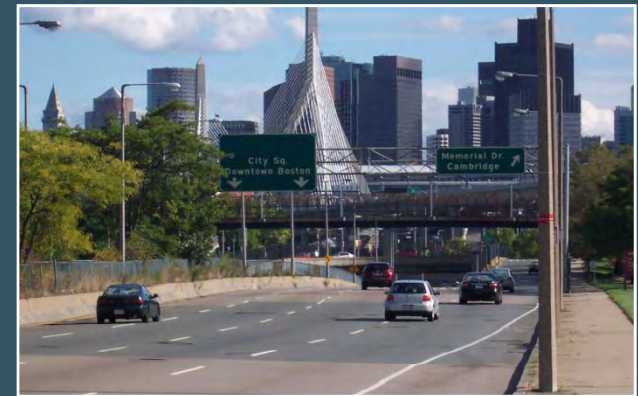
- \$600,00 in City of Boston funding for design to leverage federal dollars
- Initial earmarks for design and early phase construction (\$13 million)
- Accepted as Major Infrastructure Project in State's long range plan (potential \$100 million)
- Potential for public/private partnerships with developers





Project Team

- Tetra Tech Rizzo
- The Cecil Group
- Brown Richardson & Rowe
- Jacobs Engineering Group
- SMC



CITY OF BOSTON

Rutherford Avenue/Sullivan Square Design Project
Tetra Tech Rizzo The Cecil Group Brown, Richardson & Rowe

10



Scope and Work Products

STEP 1: Existing Conditions / Project Goals

- Inventory Transportation, Development and Open Space Projects
- Identify Design Objectives

STEP 2: Alternatives Evaluation

- Develop and Evaluate Conceptual Alternatives
- Identify Potential Development and Open Space Parcels
- Select Preferred Conceptual Design

STEP 3: Preliminary Design

- Develop Preliminary Roadway & Parcel Design
- Parking and Access Guidelines Relative to Parcel Use
- Develop Cost Estimates and Phasing Strategies



Step 1: Existing Conditions /Project Goals

■ Inventory

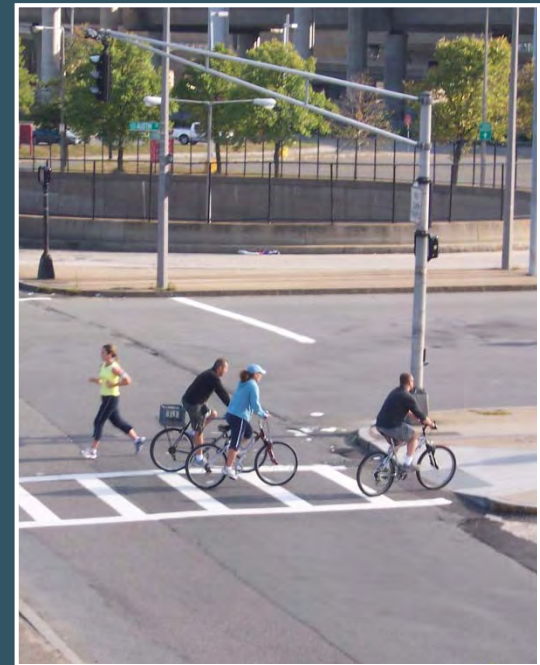
- Transportation (all modes)
- Known Development Projects
- Public / Open Space
- Environmental
- Utilities

■ Establish Design Objectives and Evaluation Criteria



Step 2: Alternatives Evaluation

- Develop Alternatives (up to 3)
- Evaluate Alternatives
 - Transportation (all modes)
 - Redevelopment Potential
 - Opportunities for Open Space/Parks
 - Costs
 - Utilities
 - Environmental
- Select Preferred Conceptual Design





Step 3: Preliminary Design

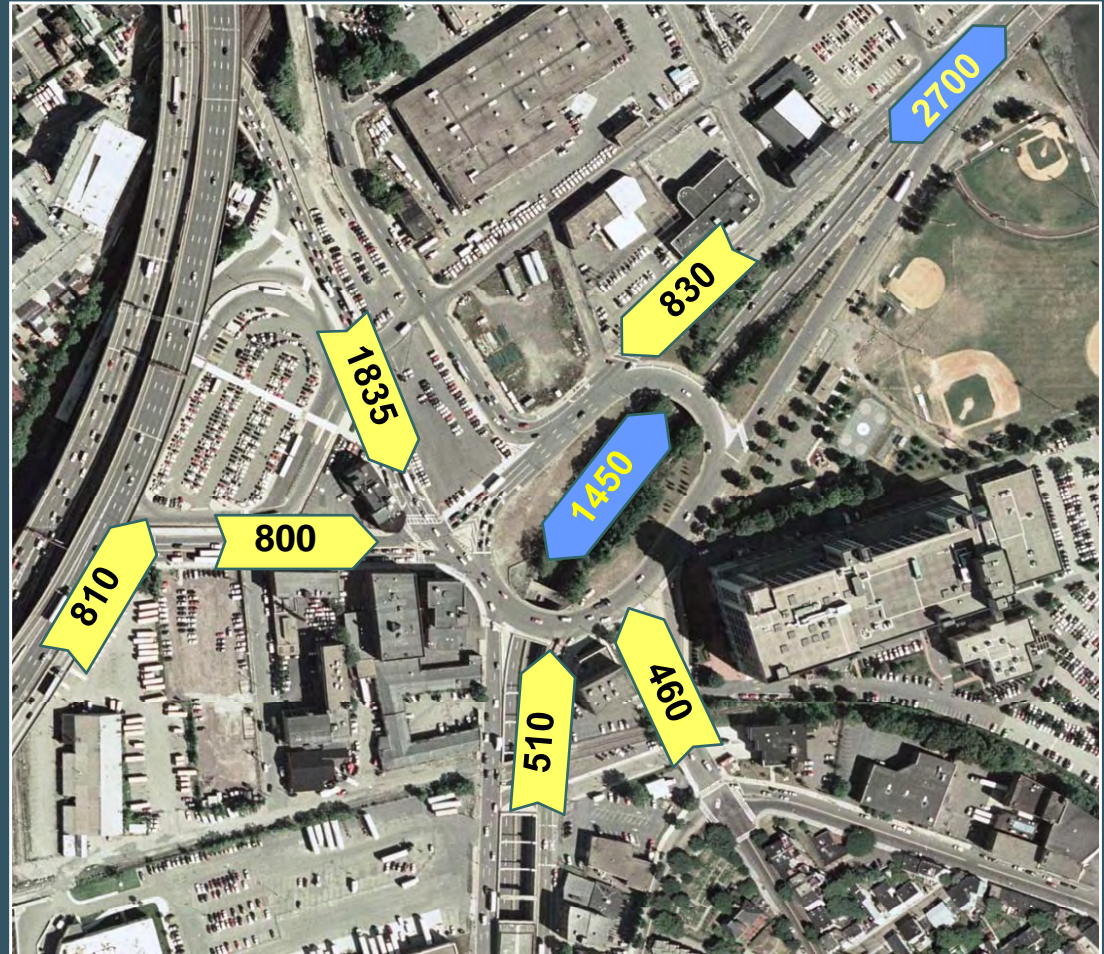
- Prepare Preliminary Roadway and Parcel Design
 - Roadway Alignments and Traffic Control (i.e., signals)
 - Property Access
 - Pedestrian and Bicycle Accommodations
 - Landscaping and Public Open Space
 - Utilities
 - Structural Requirements
- Parking and Access Guidelines Relative to Parcel Use
- Develop Cost Estimates and Phasing Strategies





Sullivan Square

Existing
Conditions:
AM Peak Hour
Traffic Volumes



CITY OF BOSTON

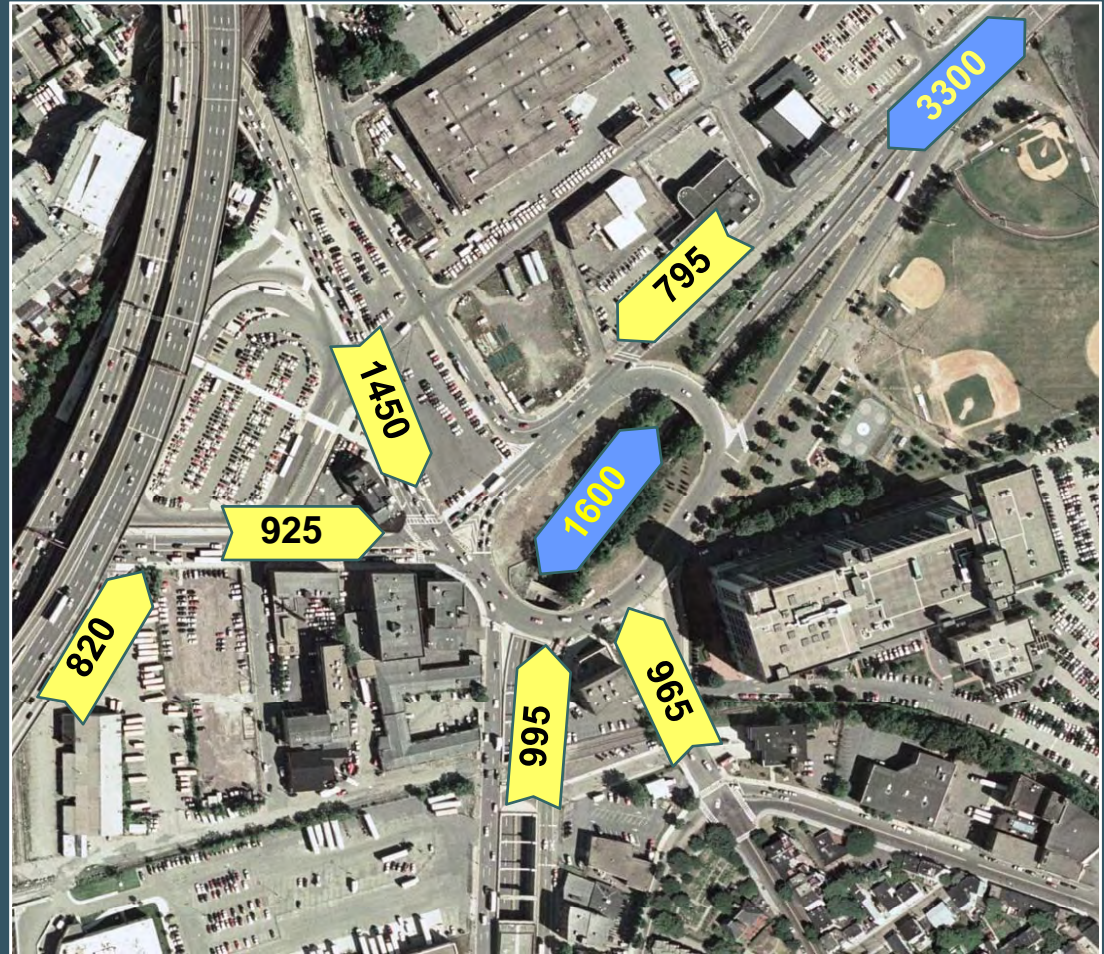
Rutherford Avenue/Sullivan Square Design Project
Tetra Tech Rizzo The Cecil Group Brown, Richardson & Rowe

15



Sullivan Square

Existing
Conditions:
PM Peak Hour
Traffic Volumes



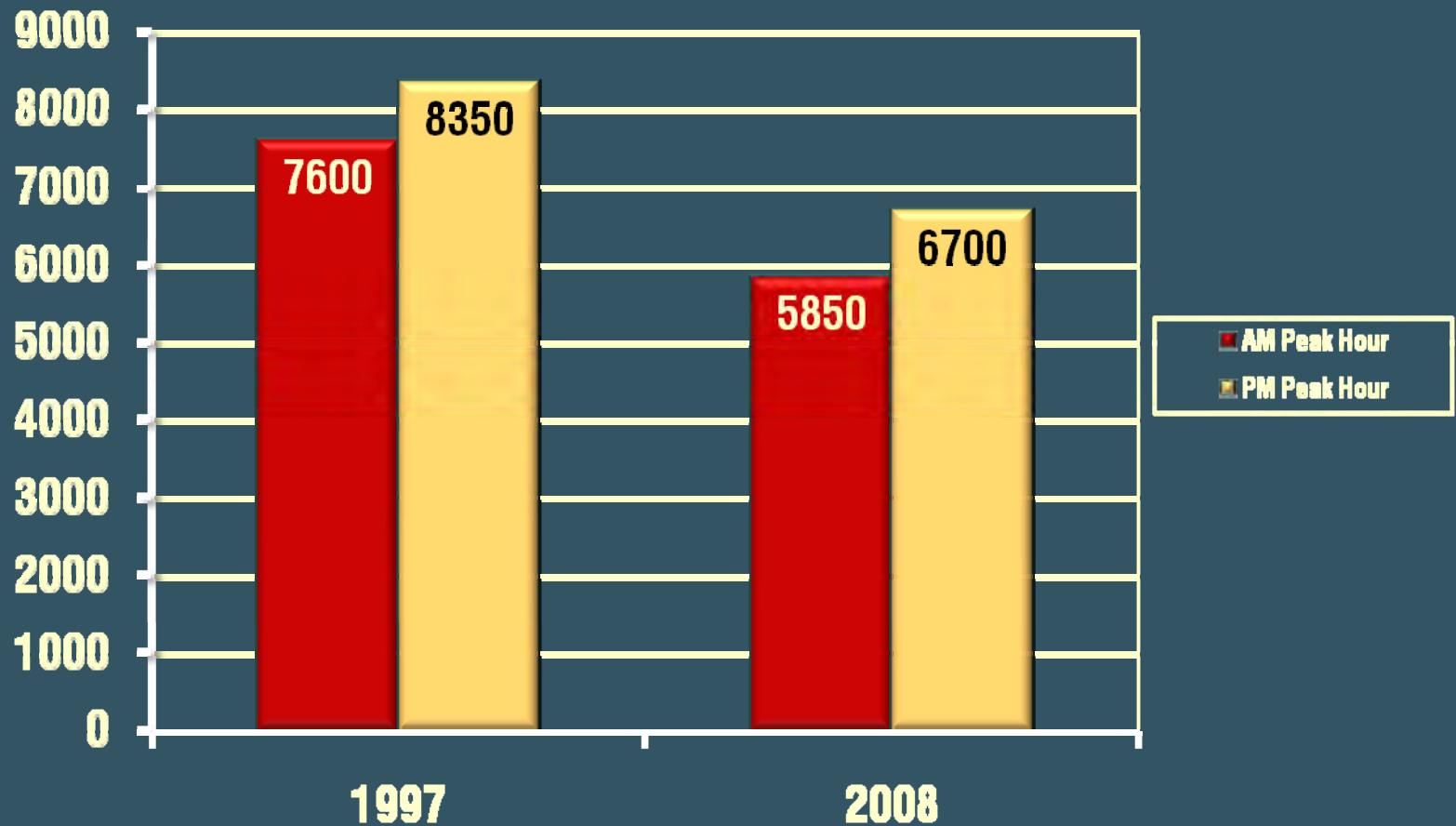
CITY OF BOSTON

Rutherford Avenue/Sullivan Square Design Project
Tetra Tech Rizzo The Cecil Group Brown, Richardson & Rowe

16



Sullivan Square



CITY OF BOSTON

Rutherford Avenue/Sullivan Square Design Project
Tetra Tech Rizzo The Cecil Group Brown, Richardson & Rowe

17



Austin Street / BHCC

Existing
Conditions:
AM Peak Hour
Traffic Volumes



CITY OF BOSTON

Rutherford Avenue/Sullivan Square Design Project
Tetra Tech Rizzo The Cecil Group Brown, Richardson & Rowe

18



Austin Street / BHCC

Existing
Conditions:
PM Peak Hour
Traffic Volumes



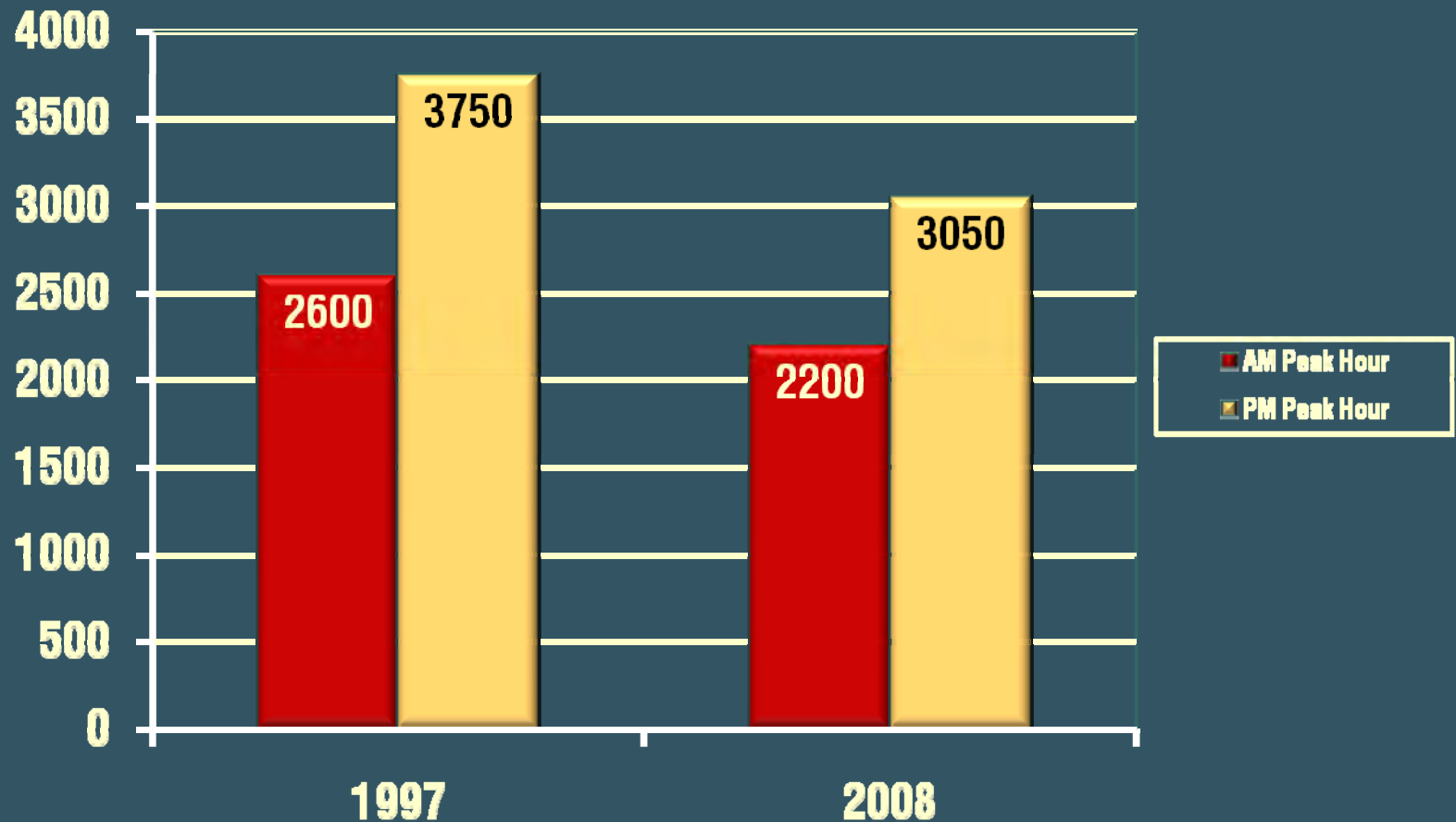
CITY OF BOSTON

Rutherford Avenue/Sullivan Square Design Project
Tetra Tech Rizzo The Cecil Group Brown, Richardson & Rowe

19



Austin Street / BHCC



CITY OF BOSTON

Rutherford Avenue/Sullivan Square Design Project
Tetra Tech Rizzo The Cecil Group Brown, Richardson & Rowe

20



City Square

Existing
Conditions:
AM Peak Hour
Traffic Volumes



CITY OF BOSTON

Rutherford Avenue/Sullivan Square Design Project
Tetra Tech Rizzo The Cecil Group Brown, Richardson & Rowe

21



City Square

Existing
Conditions:
PM Peak Hour
Traffic Volumes



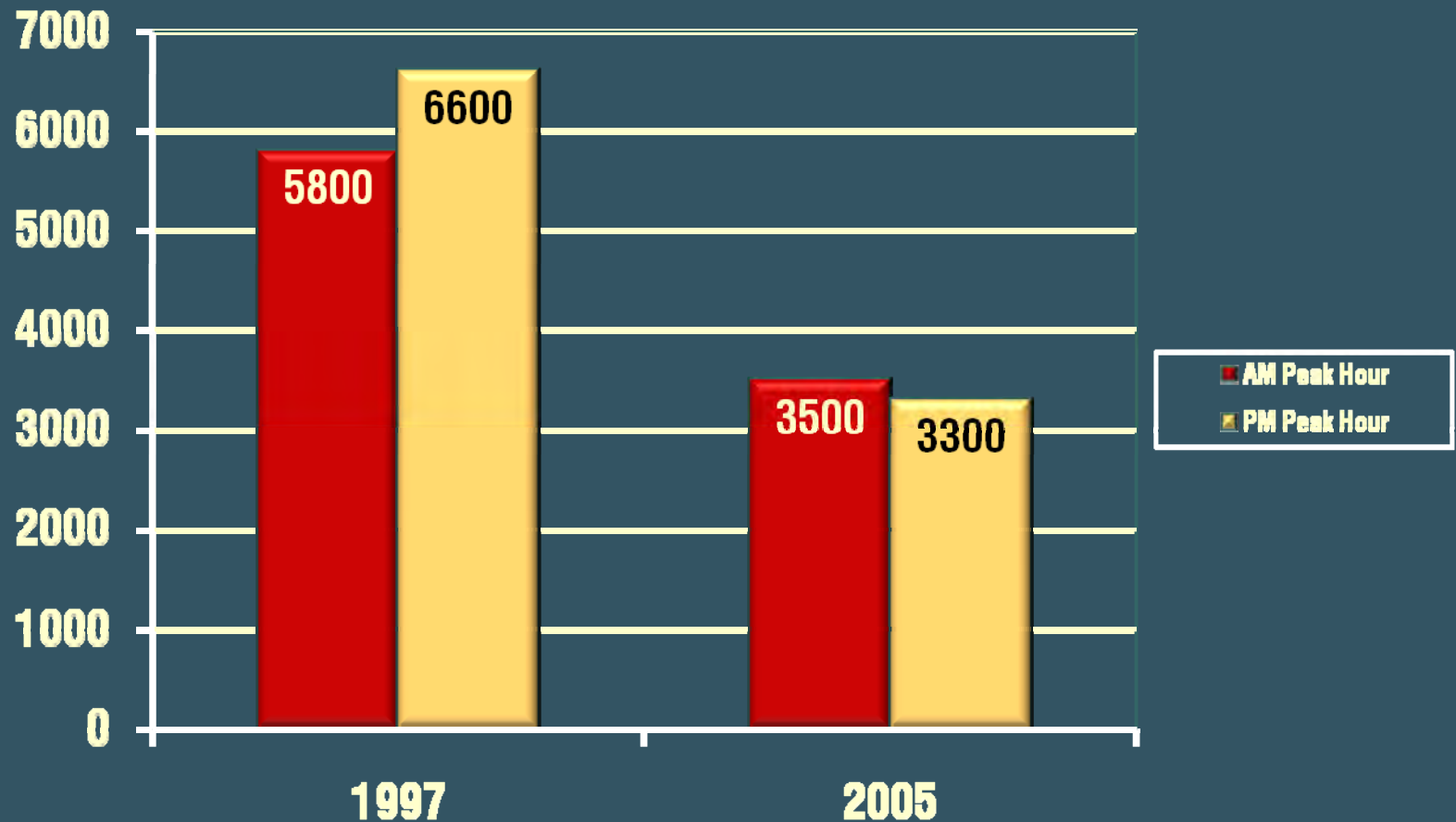
CITY OF BOSTON

Rutherford Avenue/Sullivan Square Design Project
Tetra Tech Rizzo The Cecil Group Brown, Richardson & Rowe

22



City Square



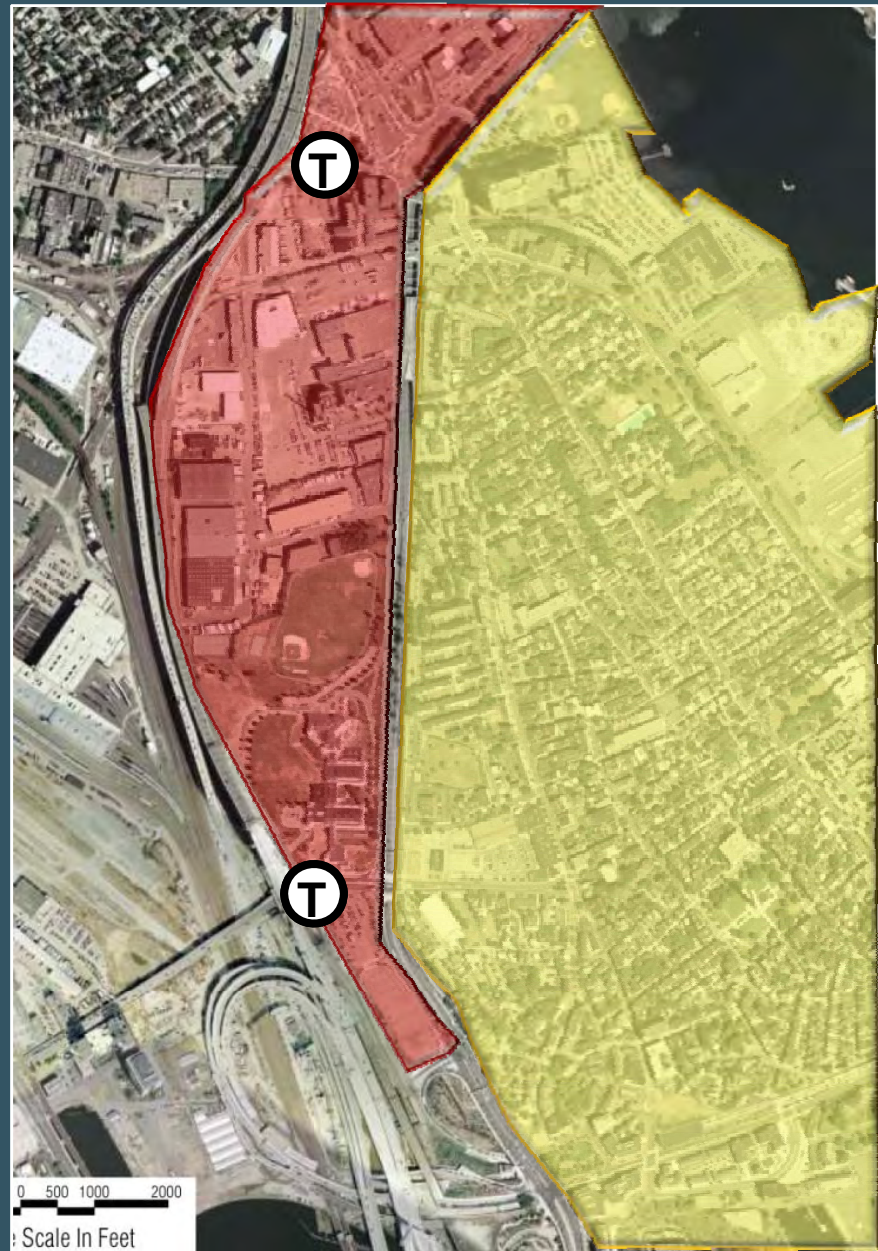
CITY OF BOSTON

Rutherford Avenue/Sullivan Square Design Project
Tetra Tech Rizzo The Cecil Group Brown, Richardson & Rowe



Land Use and Community

- Edge
- Expansion
- Neighbor
- Transit Access



CITY OF BOSTON

Rutherford Avenue/Sullivan Square Design Project
Tetra Tech Rizzo The Cecil Group Brown, Richardson & Rowe

24



Connections Across the Corridor

- Circulation
- Open Space
- Pedestrians
- Bicycles
- Transit
- Uses



CITY OF BOSTON

Rutherford Avenue/Sullivan Square Design Project
Tetra Tech Rizzo The Cecil Group Brown, Richardson & Rowe

25



Streets and Parcels

- Roles and character of streets
- Parcel and street relationships
- Parcels for Development or Open Space



CITY OF BOSTON

Rutherford Avenue/Sullivan Square Design Project
Tetra Tech Rizzo The Cecil Group Brown, Richardson & Rowe

26



Community Building

- Leverage public ownership
- Transit-orientation
- Joint public/private opportunities



CITY OF BOSTON

Rutherford Avenue/Sullivan Square Design Project
Tetra Tech Rizzo The Cecil Group Brown, Richardson & Rowe

27



Community Building

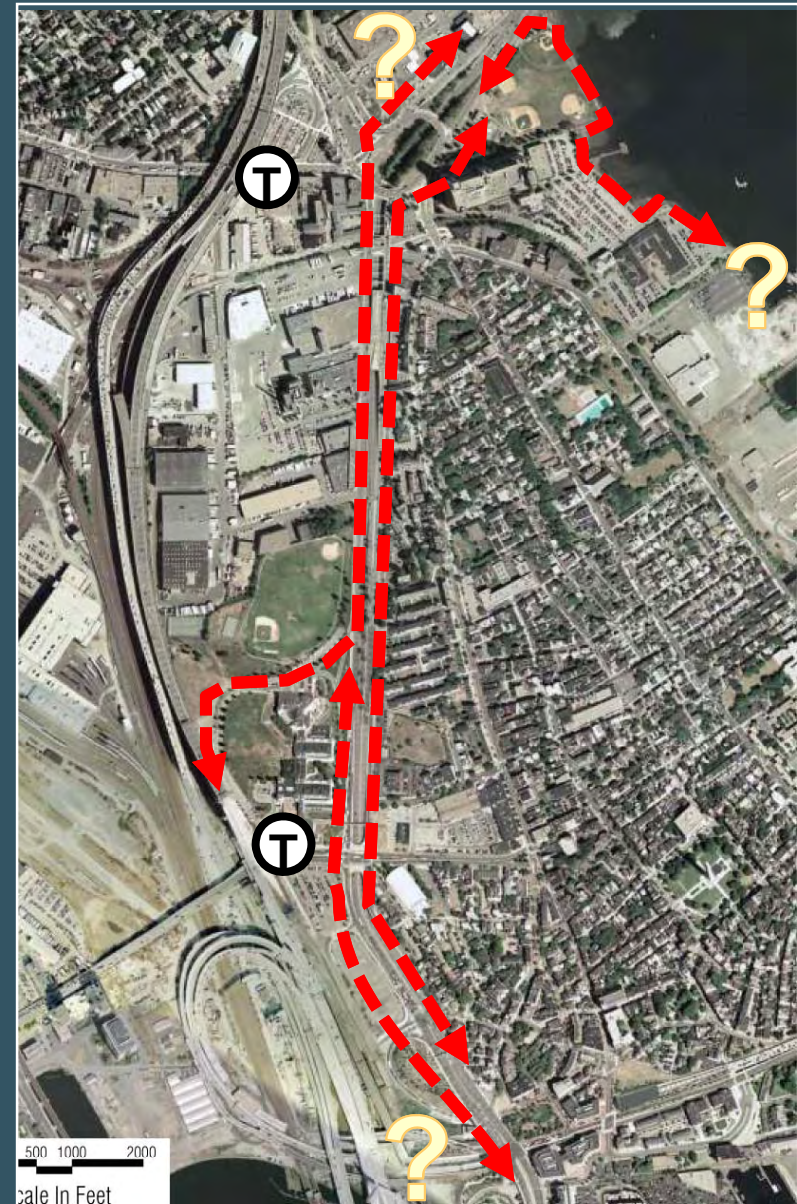
- Access, connections and future uses
- New access and circulation on the west side: opportunities for redevelopment





Connections Along the Corridor

- Circulation
- Open Space
- Pedestrians
- Bicycles
- Transit



CITY OF BOSTON

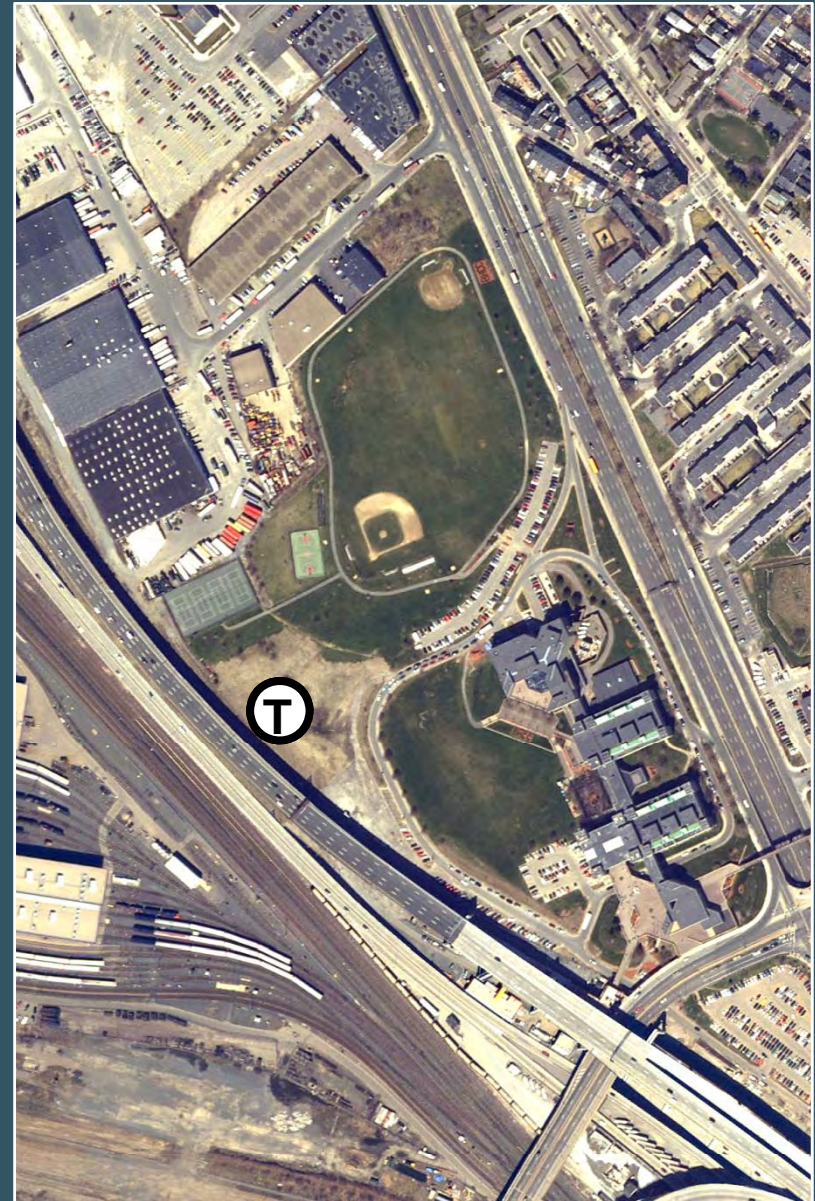
Rutherford Avenue/Sullivan Square Design Project
Tetra Tech Rizzo The Cecil Group Brown, Richardson & Rowe

29



BHCC

- Campus organization
- Circulation connection
- Programmatic connections



CITY OF BOSTON

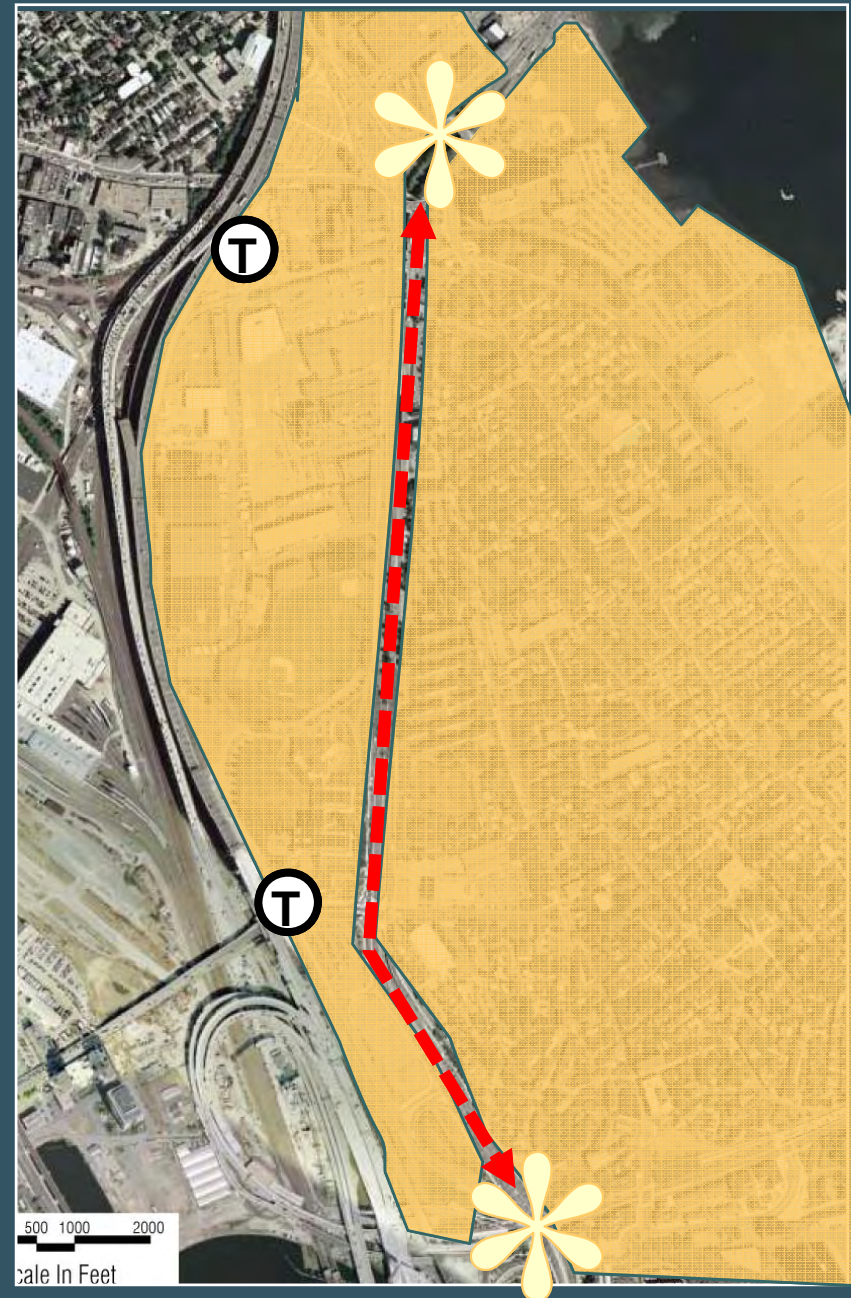
Rutherford Avenue/Sullivan Square Design Project
Tetra Tech Rizzo The Cecil Group Brown, Richardson & Rowe

30



Urban Design

- Perception and gateways
- Importance of corridors
- Relationship of the new to the old



CITY OF BOSTON

Rutherford Avenue/Sullivan Square Design Project
Tetra Tech Rizzo The Cecil Group Brown, Richardson & Rowe

31



Key Urban Design Decisions

- Roles and Character of Streets
- Parcels: use, size, location and orientation
- Open space: character and qualities
- Connections: location, character and experience for all users





Next Steps

- Meeting in late September
- Review Evaluation Criteria
- Present Alternatives
- Get feedback



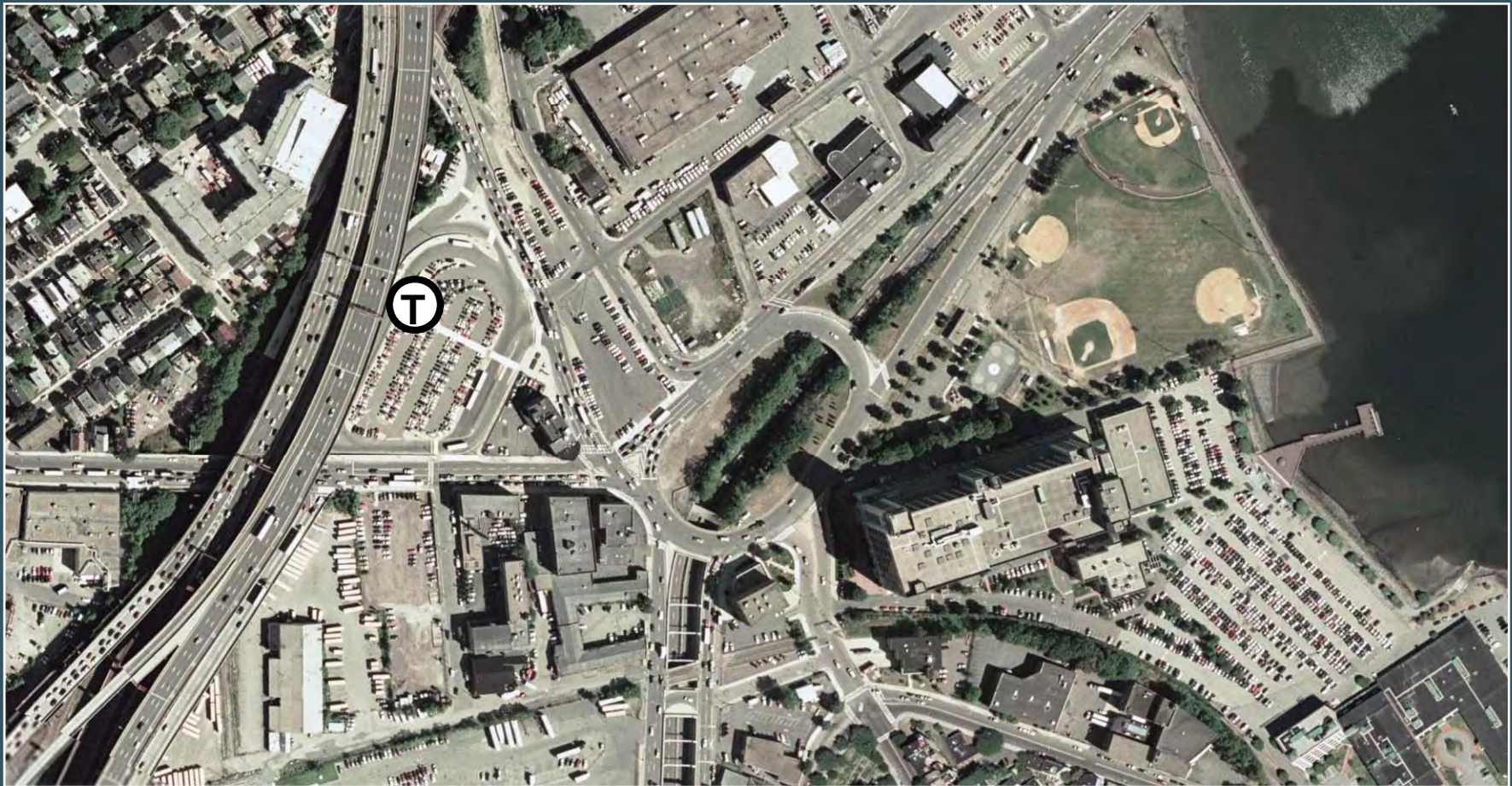
CITY OF BOSTON

Rutherford Avenue/Sullivan Square Design Project
Tetra Tech Rizzo The Cecil Group Brown, Richardson & Rowe

33



Discussion



CITY OF BOSTON

Rutherford Avenue/Sullivan Square Design Project
Tetra Tech Rizzo The Cecil Group Brown, Richardson & Rowe

34