



# Transportation & Pedestrian Action Plan

## AGENDA

February 28, 2008

### 1. Roadway and Multi-Use Path Projects

Review Circulation Options

Prioritize Projects for Design Development

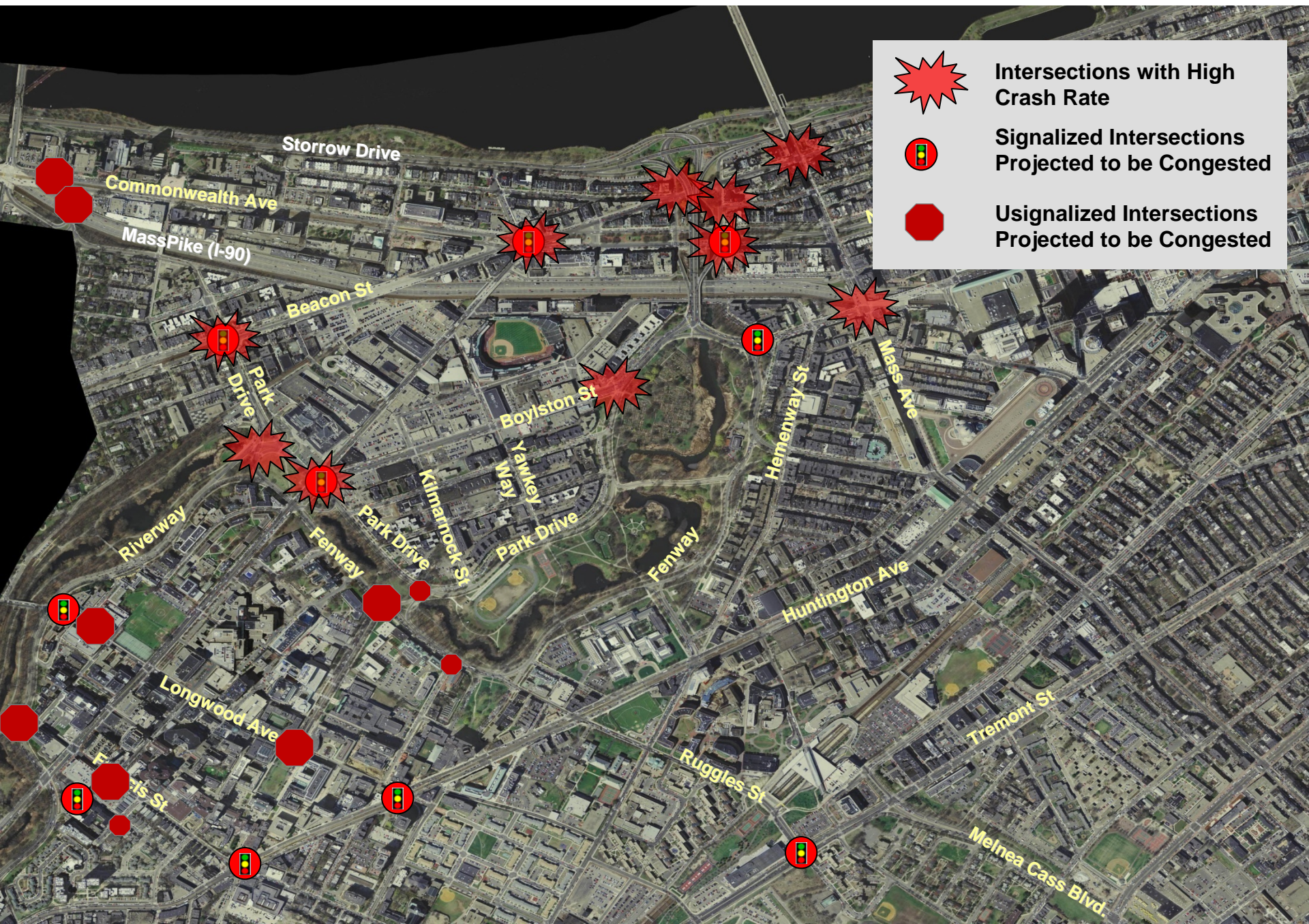
### 2. Off-Street Parking Recommendations

### 3. Presentation on Charlesgate Connection

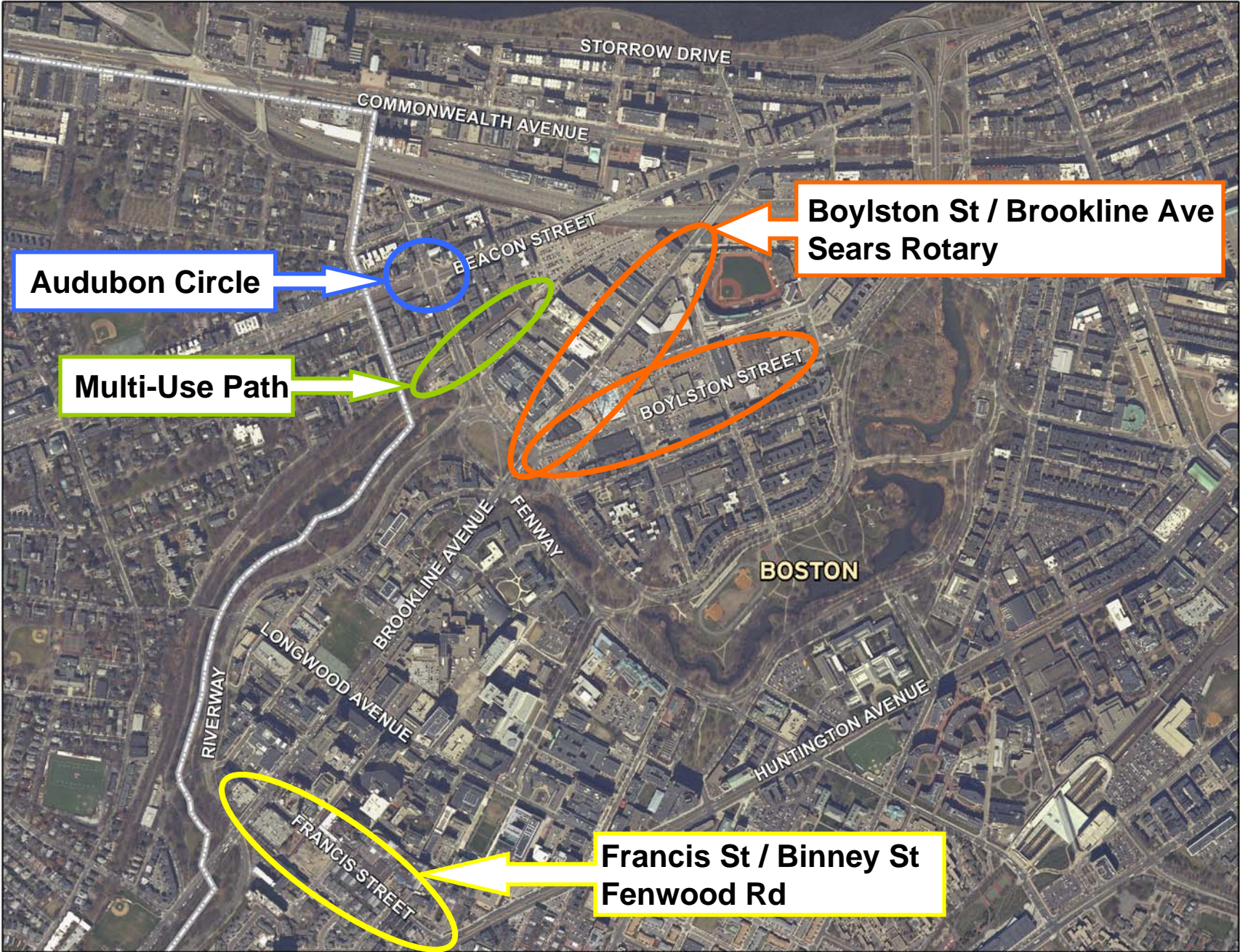
Nicole Freedman, Boston's Director of Bicycle Programs

Herb Nolan, Charlesgate Connector

## 2012 Combined “Hot Spots”



# Priority Project Areas for Right-of-Way Redesign



# Multi-Use Path: Opportunities

- Bypass busy Sears Rotary Intersection and provide car-free connections from Muddy River to Kenmore Square
- Connect Riverway Park directly to Yawkey Way station and future Parcel 7 development.

